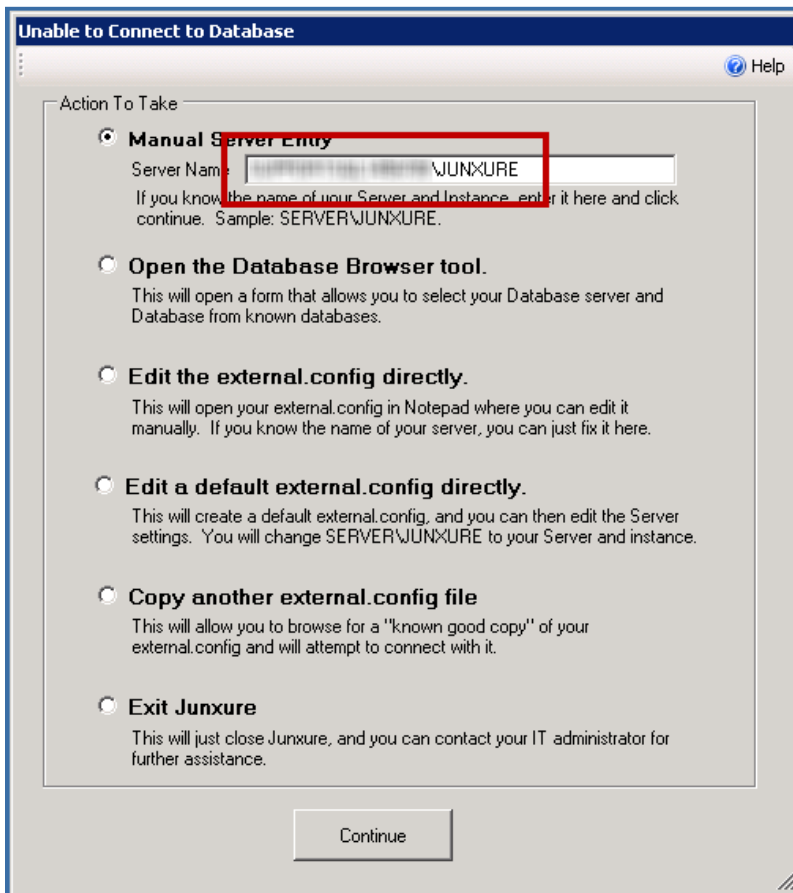


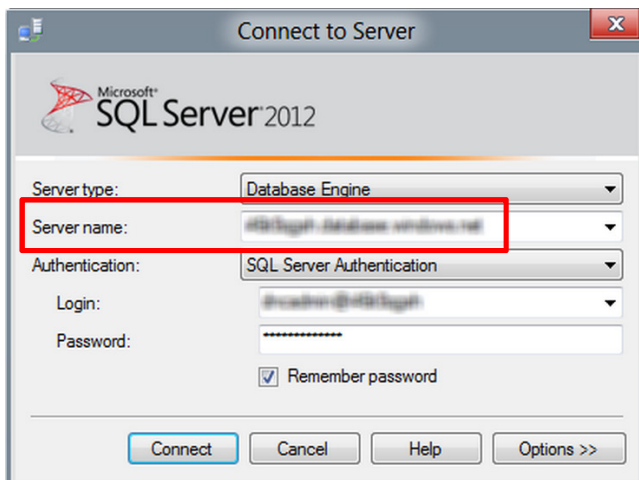
TESTING WORKSTATIONS

Go around to workstations and launch Junxure. If Junxure opens up the way the user is accustomed to, then the server move is complete.

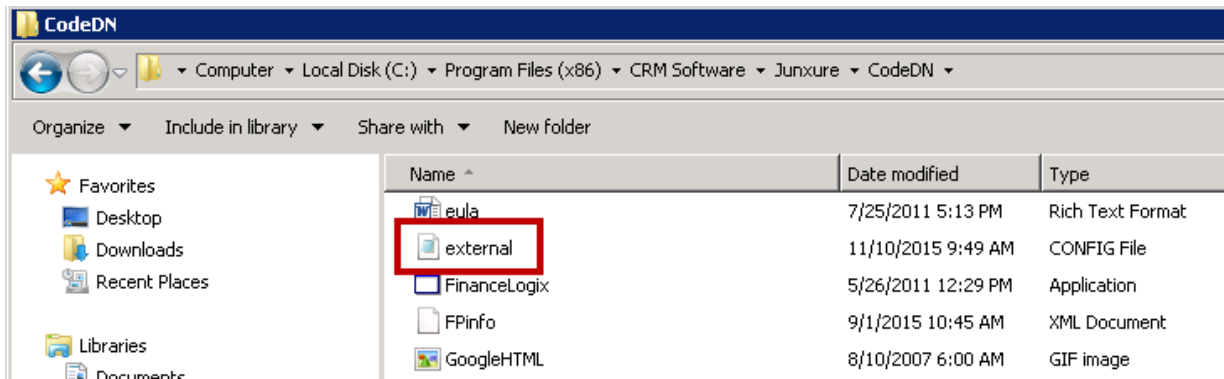
If you get this screen when you launch Junxure, this document will assist you with troubleshooting steps.



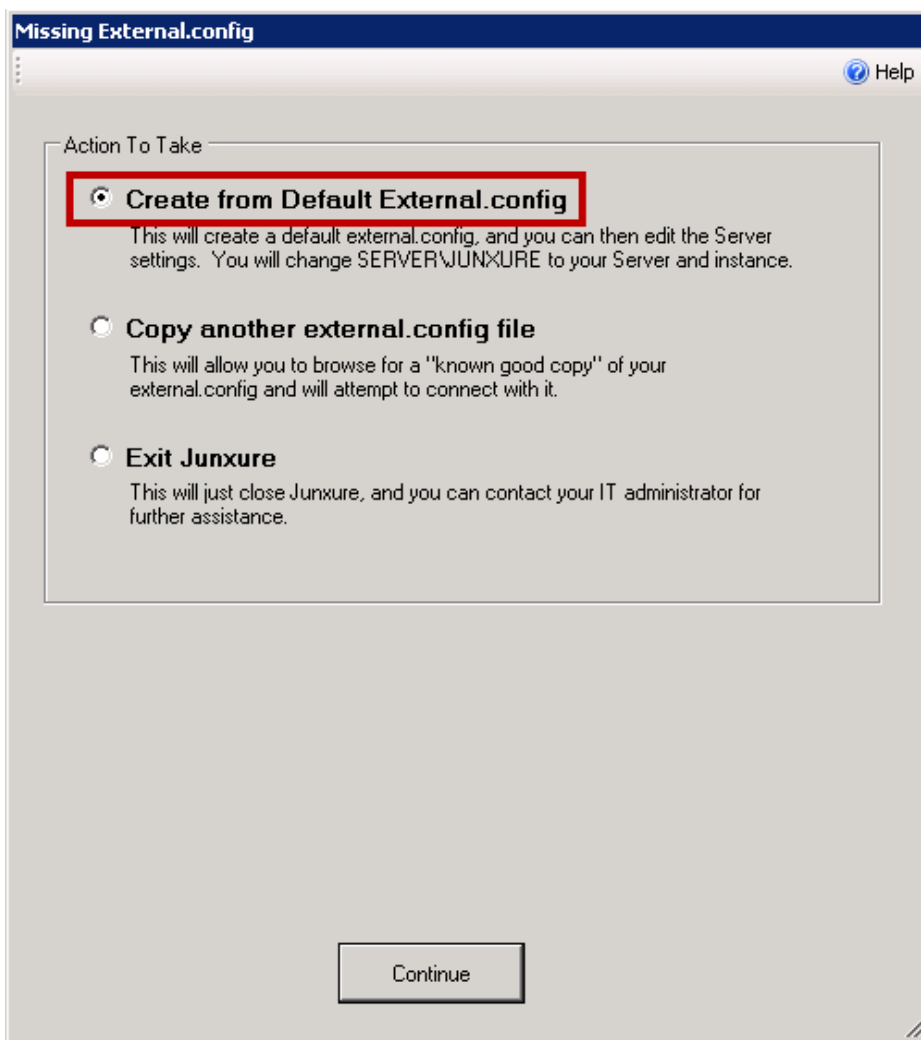
Check the Server Entry first on the Unable to Connect to Database screenshot above. To verify you have the correct Server Entry, open SQL Server Management Studio on the Server. At the Login Screen, you can check the Server Name field. If it is different you can copy the Server Name from the login screenshot below and paste it into the Server Entry field on the workstation and click Continue.



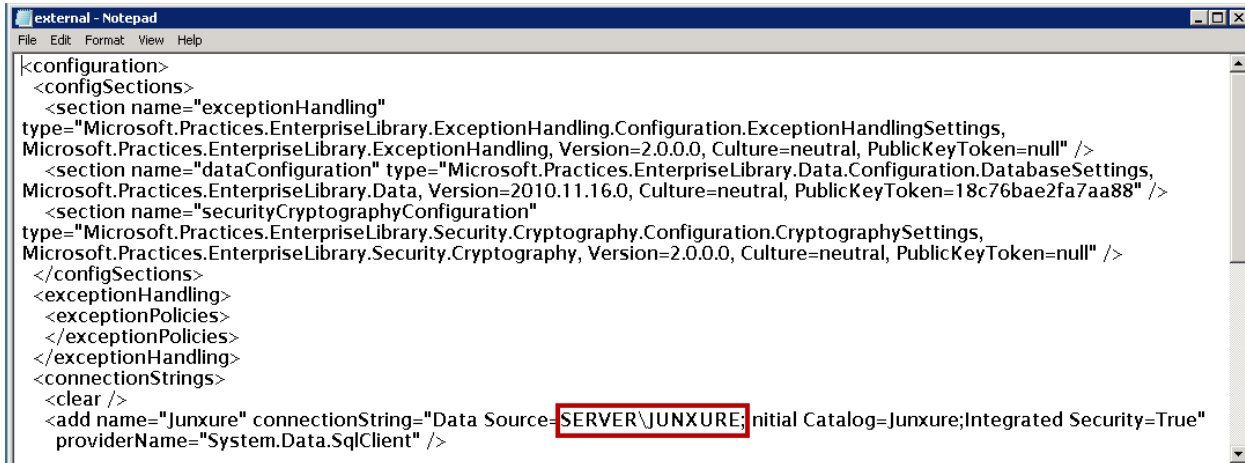
If the Unable to Connect to Database window returns, select the Exit Junxure button and click continue. The next step is to delete the External.Config file for Junxure. This is usually located at C:\Program Files (x86)\CRM Software\CodeDN\External.Config.



Delete the file and launch Junxure again. You will see the window below.



Select Create from Default External.config. Notepad will automatically launch open and you will copy and paste the Server Name and replace SERVER\JUNXURE.



```
<configuration>
  <configSections>
    <section name="exceptionHandling"
type="Microsoft.Practices.EnterpriseLibrary.ExceptionHandling.Configuration.ExceptionHandlingSettings,
Microsoft.Practices.EnterpriseLibrary.ExceptionHandling, Version=2.0.0.0, Culture=neutral, PublicKeyToken=null" />
    <section name="dataConfiguration" type="Microsoft.Practices.EnterpriseLibrary.Data.Configuration.DatabaseSettings,
Microsoft.Practices.EnterpriseLibrary.Data, Version=2010.11.16.0, Culture=neutral, PublicKeyToken=18c76bae2fa7aa88" />
    <section name="securityCryptographyConfiguration"
type="Microsoft.Practices.EnterpriseLibrary.Security.Cryptography.Configuration.CryptographySettings,
Microsoft.Practices.EnterpriseLibrary.Security.Cryptography, Version=2.0.0.0, Culture=neutral, PublicKeyToken=null" />
  </configSections>
  <exceptionHandling>
  <exceptionPolicies>
  </exceptionPolicies>
</exceptionHandling>
  <connectionStrings>
    <clear />
    <add name="Junxure" connectionString="Data Source=SERVER\JUNXURE; initial Catalog=Junxure;Integrated Security=True"
providerName="System.Data.SqlClient" />
  </connectionStrings>
</configuration>
```

Launch Junxure again. If the Unable to Connect to Database window returns, proceed to the ODBC document for further assistance.